

PARTNERSHIPS IN OPEN INNOVATION: NORTH AMERICA'S ONLY PORT LOGISTICS ACCELERATOR

PRESENTED BY DANIEL OLIVIER

MONTREAL, NOVEMBER 2019



The Chartered
Institute of
Logistics and
Transportation of
North America

PORT  MONTRÉAL

AGENDA

1. PORT OF MONTREAL OVERVIEW
2. SMART PORT VISION
3. OPEN INNOVATION

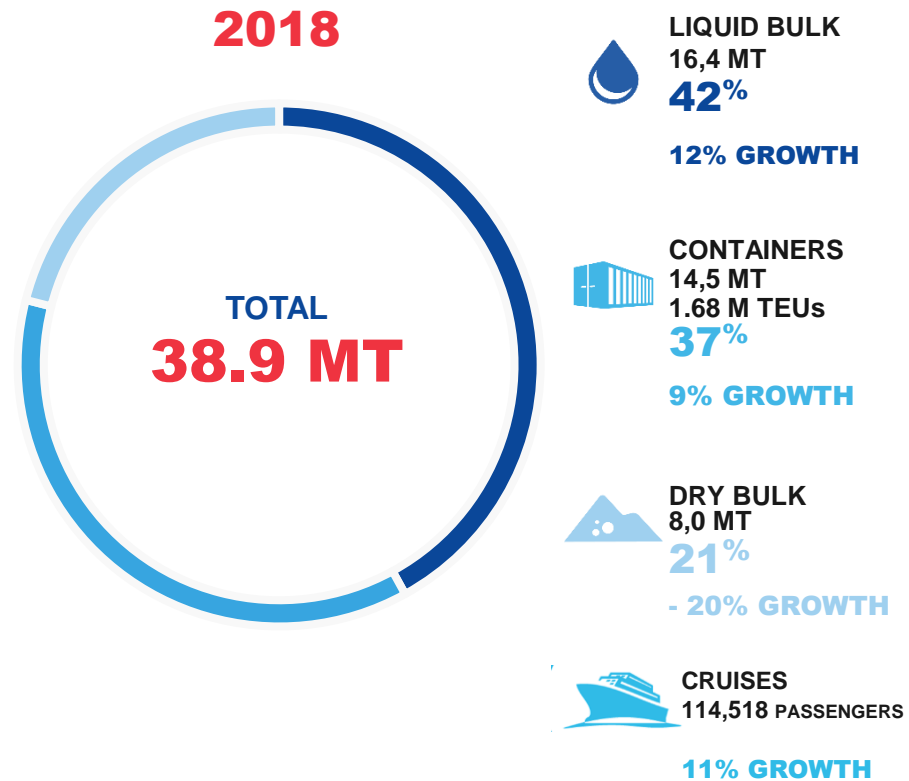


OVERVIEW





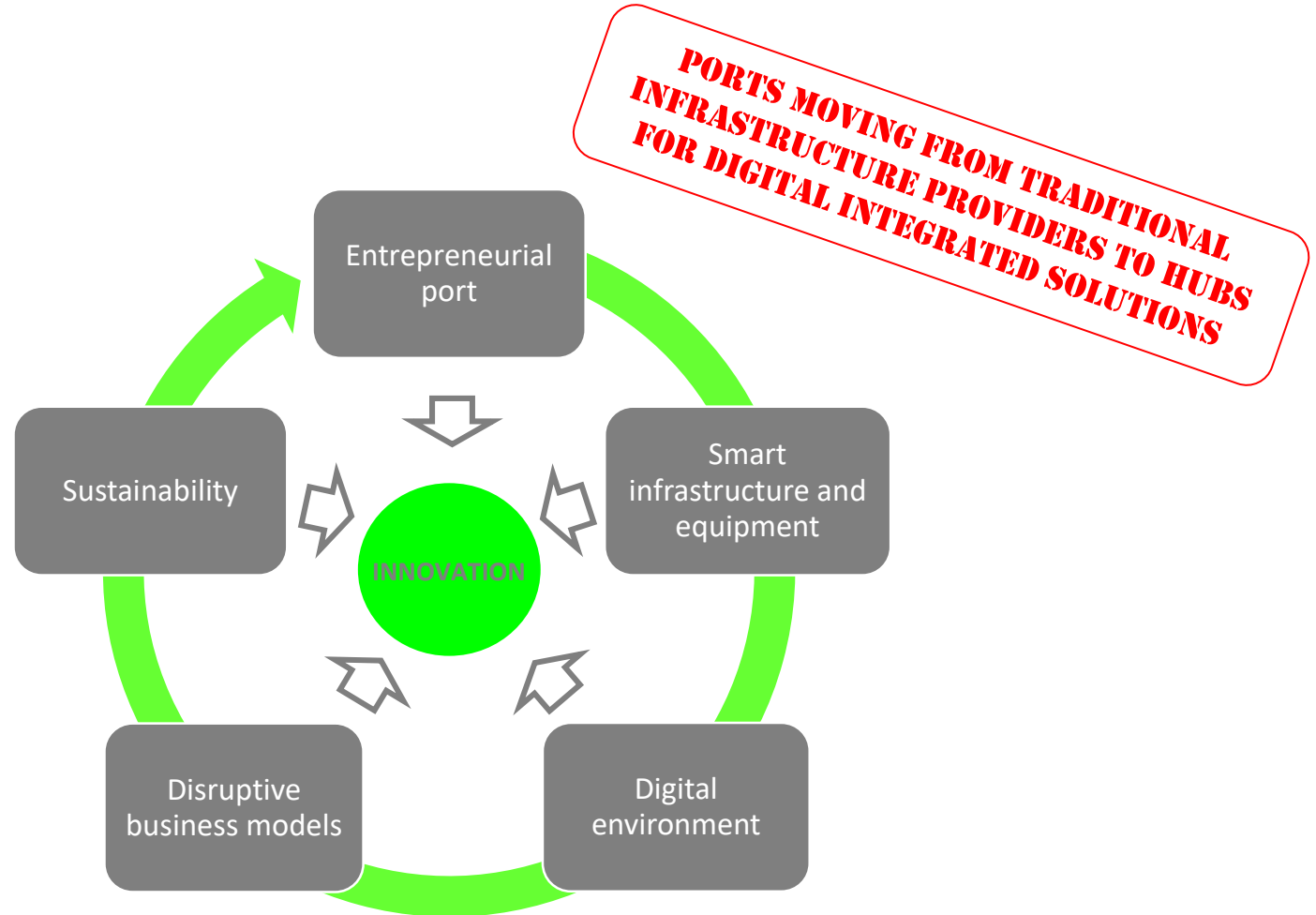
INNOVATION AS DIFFERENCIATOR



SMART PORT VISION



SMART PORT VISION



WORLD-CLASS INNOVATION LEADER

MONTREAL PART OF GLOBAL SMART PORT COMMUNITY



WORLD-CLASS INNOVATION LEADER

PORT OF MONTREAL FOUNDING MEMBER OF NEW INNOVATION SUPERCLUSTER

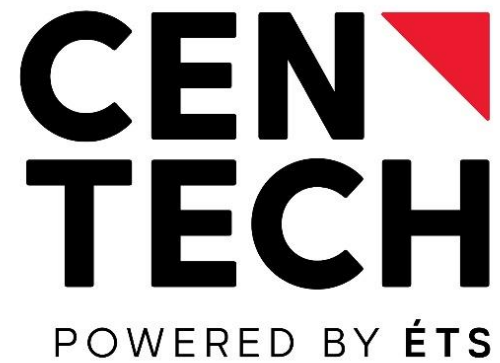


<https://scaleai.ca/>

- Government of Canada established five **innovation superclusters** across the country
- Montreal supercluster is called **Scale.AI** and is aimed at making Canada a global leader in AI-powered logistics solutions
- **250 millions \$** in funding for AI-driven projects to boost competitiveness of Montreal supply chains

OPEN INNOVATION: **CENTECH PARTNERSHIP**

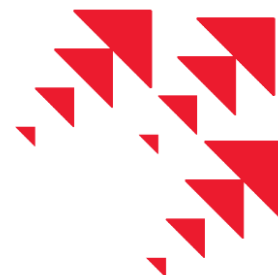




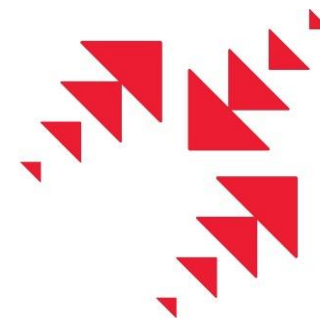
**World-class
accelerator**



ACCÉLÉRATION



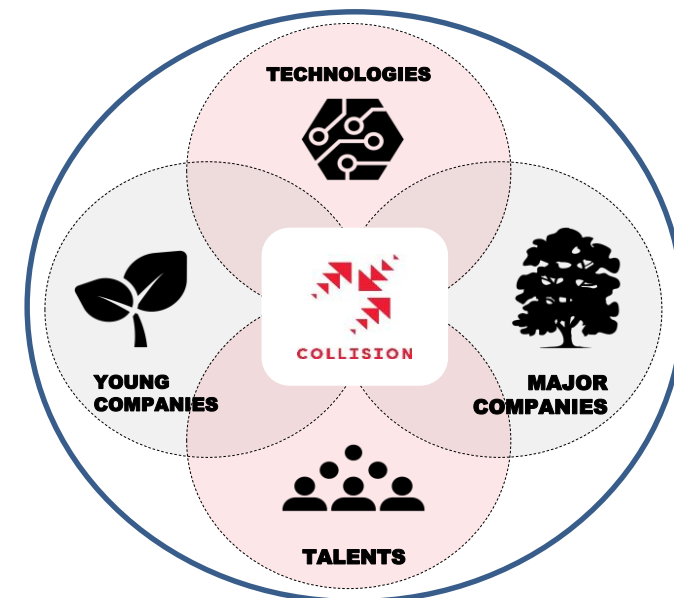
PROPULSION



COLLISION

CENTECH COLLISION PROGRAM

BIG BUSINESS MEETS STARTUPS UNDER ONE ROOF



Port of Montreal contracts with startups on a 4 month cycle to accelerate innovation by introducing scalable digital solutions that address real challenges facing the Montreal cargo community.

Advancing four pillars of innovation:

1. Supply chain visibility and freight mobility
2. Cybersecurity
3. Process improvement and agility
4. Supply chain decarbonization

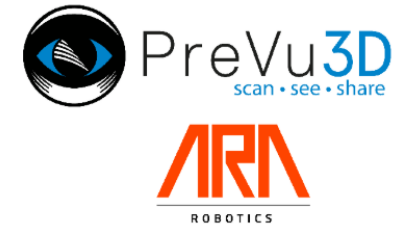


DEEP TECH TO IMPROVE PORT COMPETITIVENESS

ONGOING PROJECTS

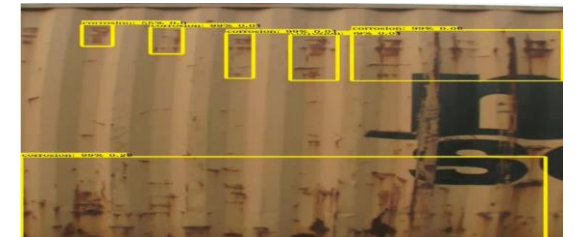
Digital twin

- 3D immersive experience of the port supported by augmented reality
- Infrastructure planning tool
- Fire prevention simulations and training tool



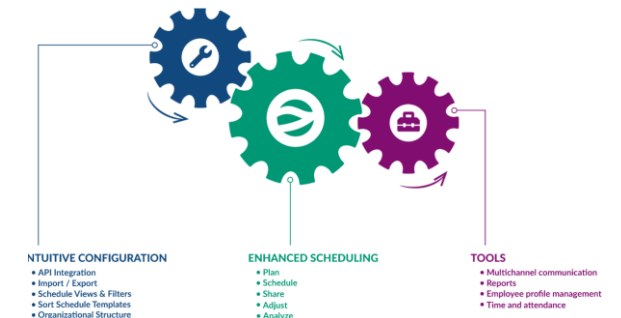
AI-powered container inspection

- Scanning of inbound truck containers for seals, placards, rust, etc. Anomaly detection.
- Facilitate and streamline human verification
- Increase truck fluidity



Automated labor dispatch

- Application will automatically contact replacement workers to fulfill vacancies
- Pre-programmed labor contract parameters
- Port-wide potential applications



THE PARTNERSHIP



1. ACCELERATE INNOVATION CYCLE
2. ACCESS NEW TALENT POOL
3. ESTABLISHED CREDENTIALS
4. TURN KEY ECOSYSTEM
5. ADVISORY AND TECH EXPOSURE





THANK YOU

Daniel Olivier
Director Business Intelligence and Innovation
Montreal Port Authority
olivierd@port-montreal.com



Additional info at <https://www.port-montreal.com/fr/innovation.html>

