

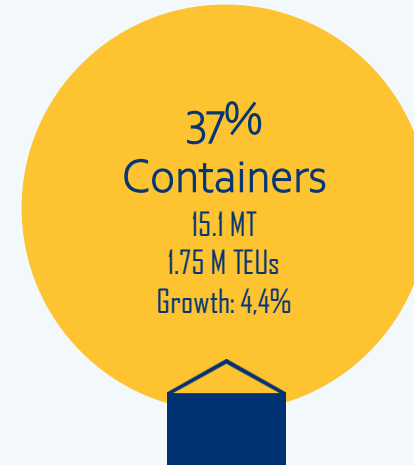
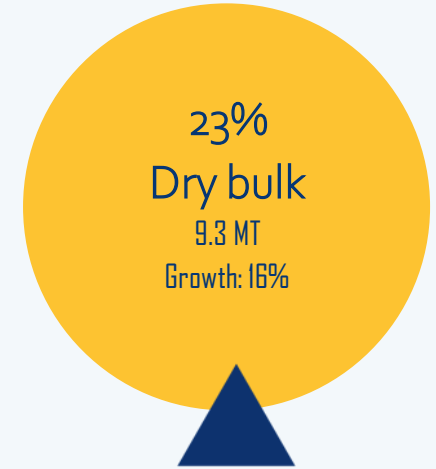
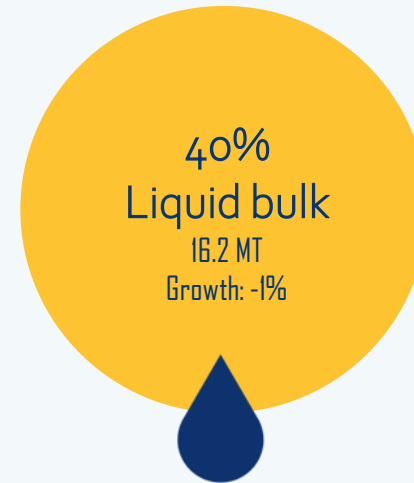


Discover the
Port of Montreal

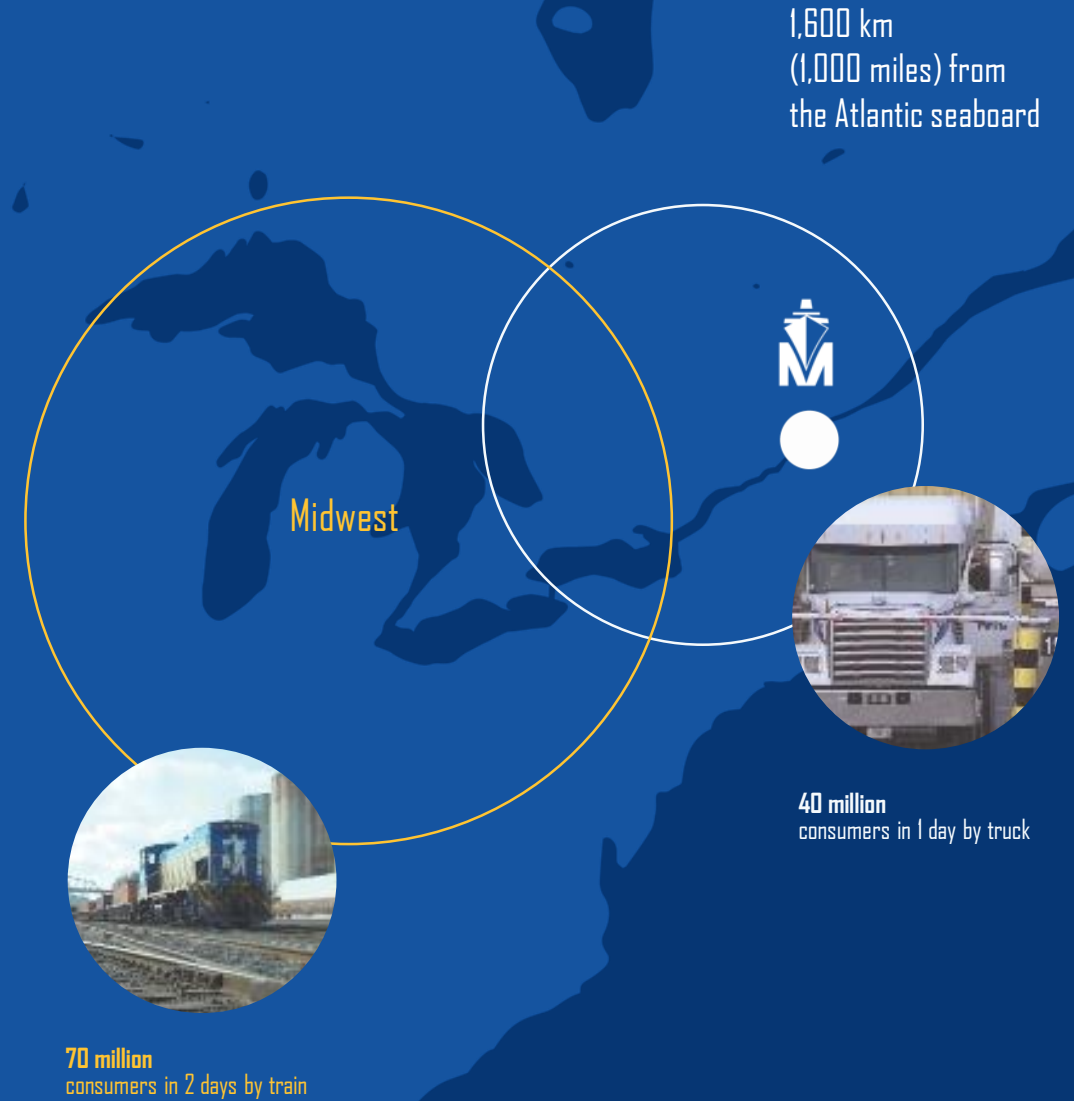


Diversified port

2019 – Record year
40.6 MT
(+7.6%)



110 million consumers reached in just 48 hours



Destination port

Direct services with no intermediate stops
Vessels 100% unloaded and loaded

Trade balance:
Vessels — 52% imports / 48% exports
Trains — 51% imports / 49% exports



The Port of Montreal at work



Supply chain resilience

- Action plan allowing the port to remain operational since the beginning of the pandemic
- Mapping of available storage space
- Contact with our partners to ensure fluidity of our intermodal operations
- covid19@port-montreal.com

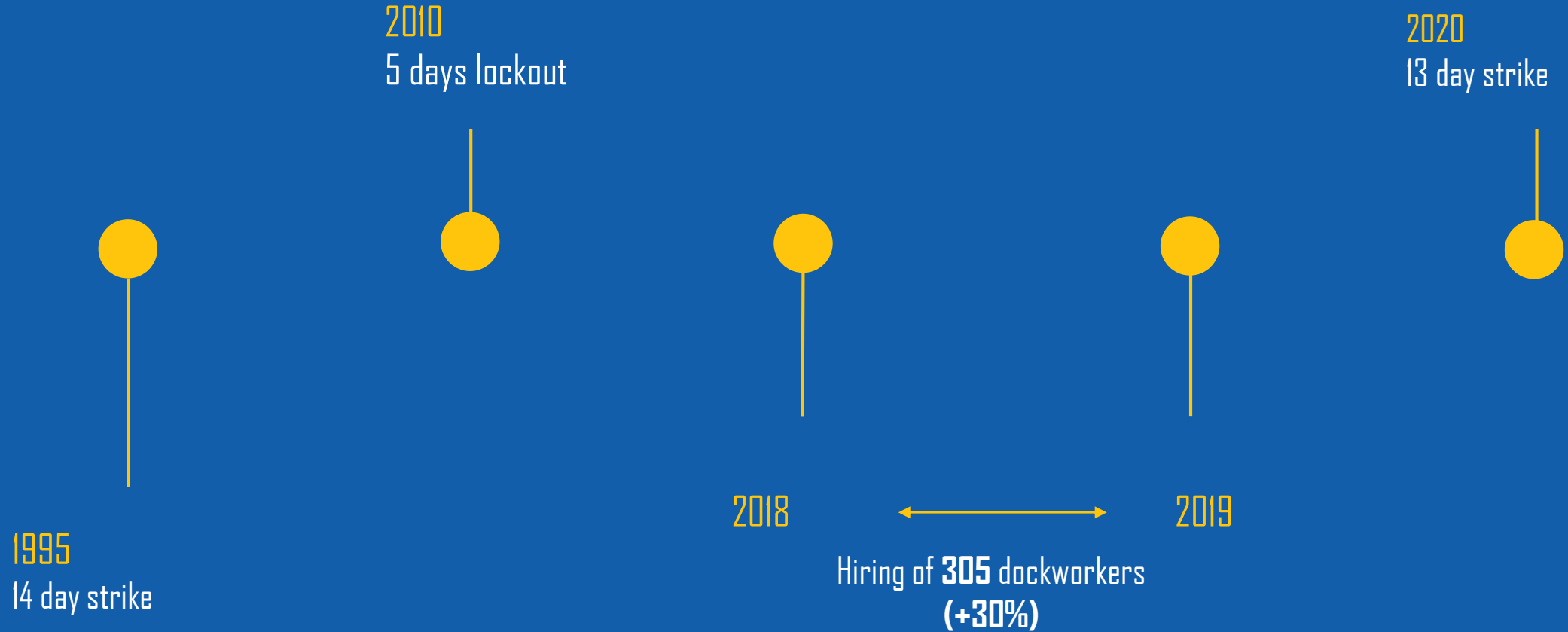
Labor update



Port at work

- End of general strike on august 21st 2020
 - Checkers: New agreement reached
 - Longshoremen: New contract under negotiation

7



A promising future



Growth and optimization at the Port

9

Grand Quay

Construction of an observation tower at the Grand Quay

Expected to open: 2021

Railway area

Installation of 6 km of additional tracks

Relocation of the Port Road

Start of work: 2020

Road link

Construction of a road link spanning Notre-Dame Street

Direct connection to highway network for trucks

End of work: 2022

Bickerdike Terminal

Redevelopment of truck accesses

Increase in electrical capacity

Redevelopment of container and cargo storage areas

Development of a docking area for cruise ships

End of work: 2021

Viau Terminal

Second phase of construction of Viau Terminal

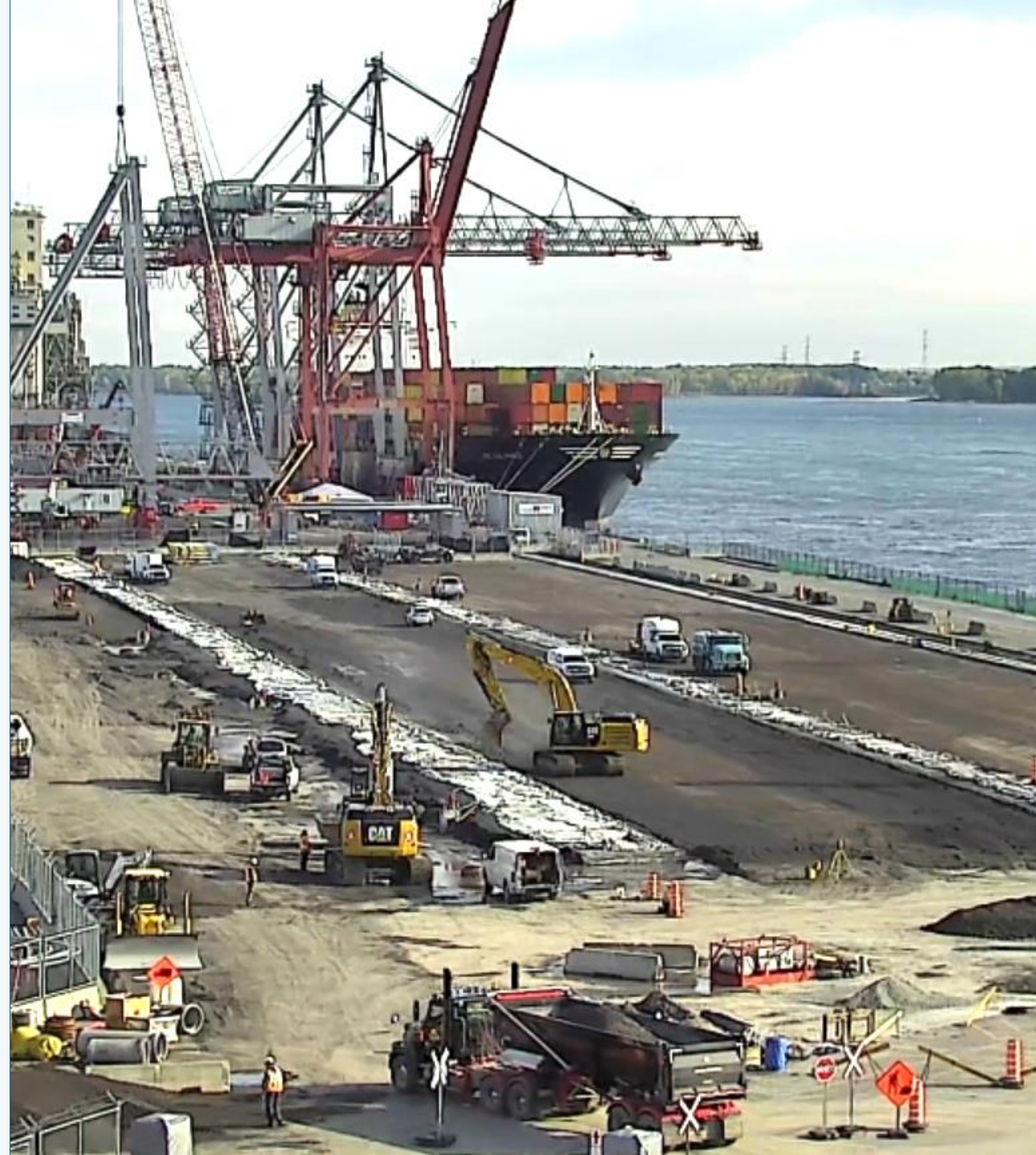
Additional capacity: 250,000 TEUs

Total capacity (phases 1 and 2): 600,000 TEUs

End of work: December 2020

Viau Terminal

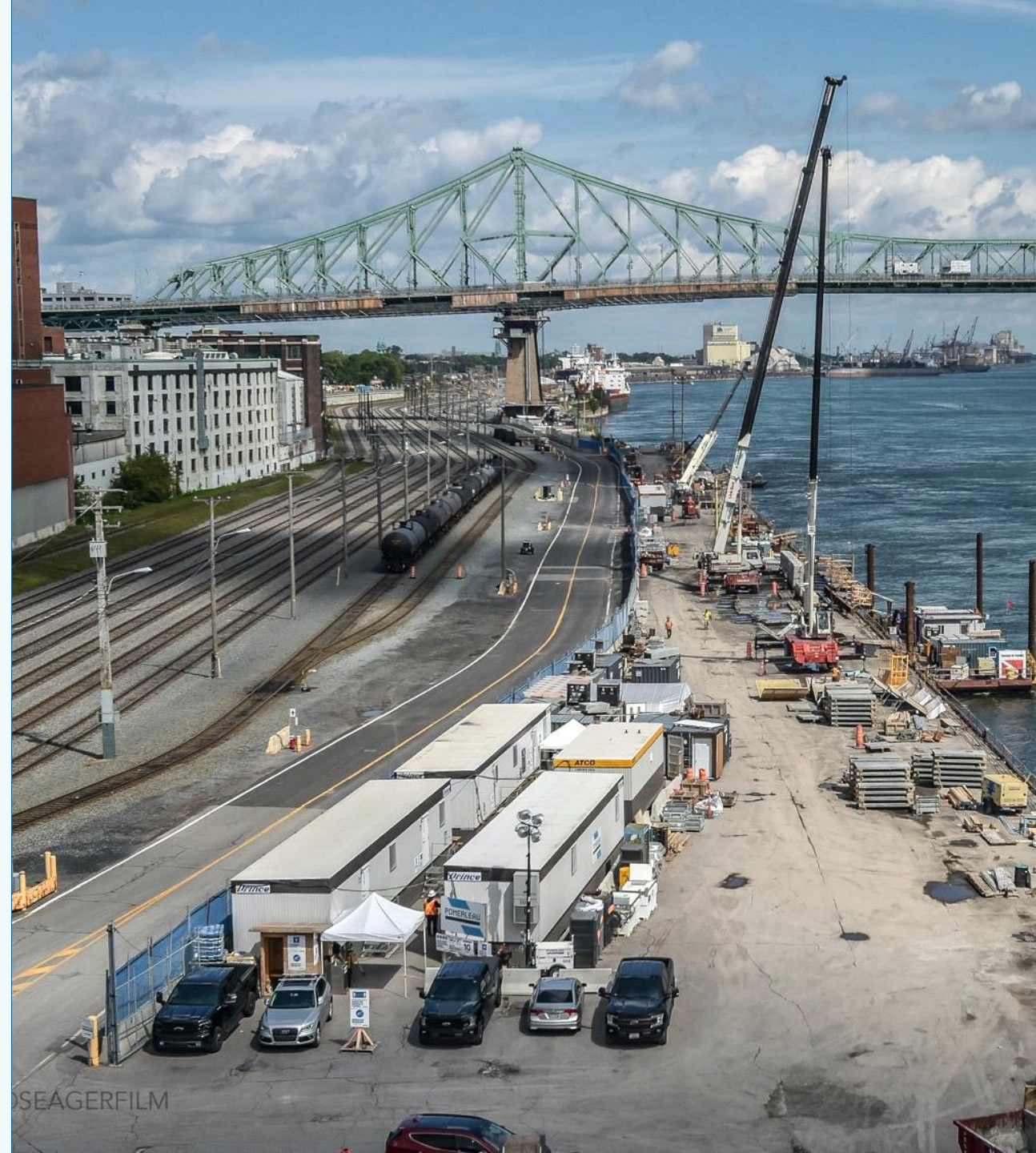
- Second phase of construction of Viau Terminal
- Additional capacity: 250,000 TEUs
- Total capacity (phases 1 and 2): 600,000 TEUs
- End of work: December 2020



Railway System Optimisation

- Expansion of the intermodal network
- Addition of 6 km of tracks
- Optimization of rail handling capacity by 20%

**Improved rail fluidity
to better serve your customers**



Expansion of the Port of Montreal in Contrecoeur

12

- New container terminal with a 1.5 million TEU capacity
- Two berths (total of 675 m)
- Surface area: 4.67 km²
- Intermodal rail yard and marshalling yard
- On-site connection to Class I rail network
- Proximity to Highway 30 / Route 132
- Economic benefits: 5,000 jobs during construction and 1,000 direct jobs in operation





An innovative port

CENTECH

Growing in an ecosystem



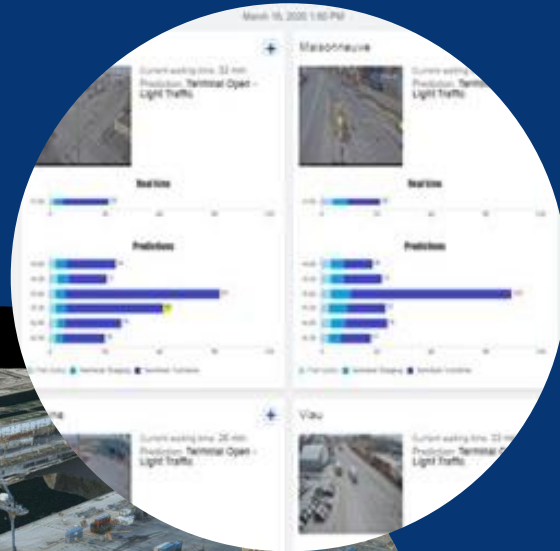
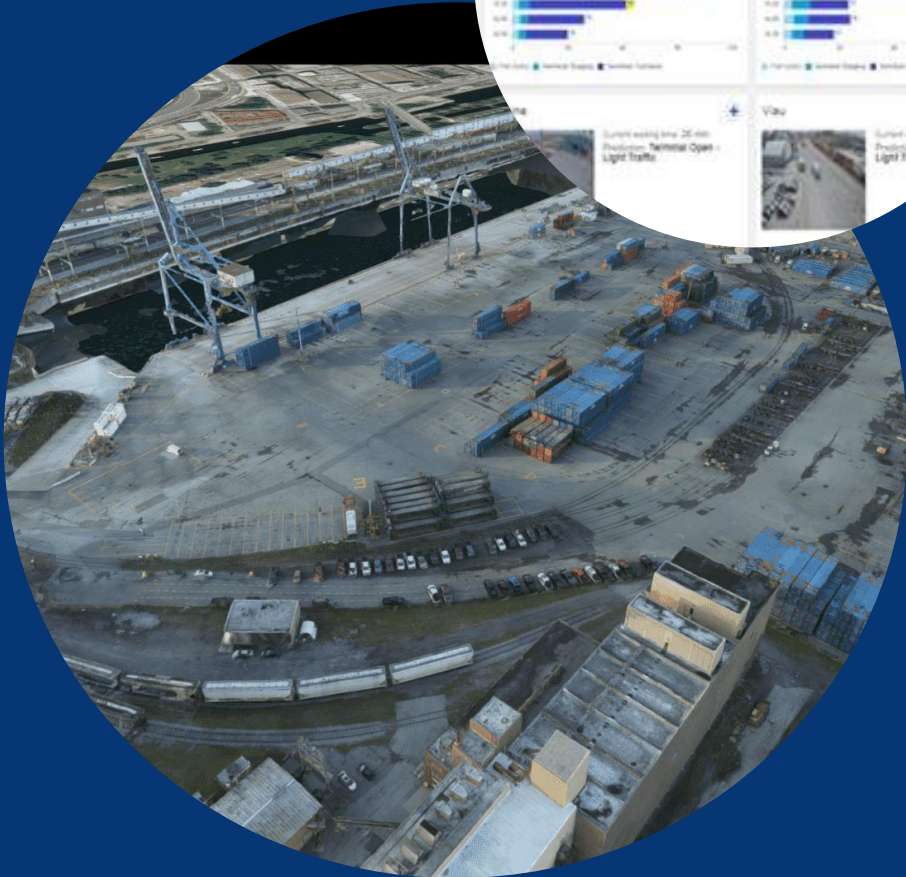
**CEN
TECH**
POWERED BY ETS

World-class
accelerator

Consolidating our position as a smart port

- Collaboration with local start-ups
- Accelerating our digital transformation
- Improving our initiative visibility

Projects



Innovative applications

- **PREVU3D**: Rethinking port space
- **Trucking PORTal**: Avoid congestion and improve truck operations
- **ARGO**: Vessel arrival predictive analytics

Accelerate the access to critical cargo using AI

Consolidate and load vessel data

Apply AI Algorithms to track & trace medical supplies

Grant of 500k \$ from the Federal and Provincial government

VIDEO

CargO2ai



Digitizing the global supply chain

17

Enable true information sharing and collaboration across supply chains

Reduce trade friction

Major Global partners integrated onto TradeLens:

IBM

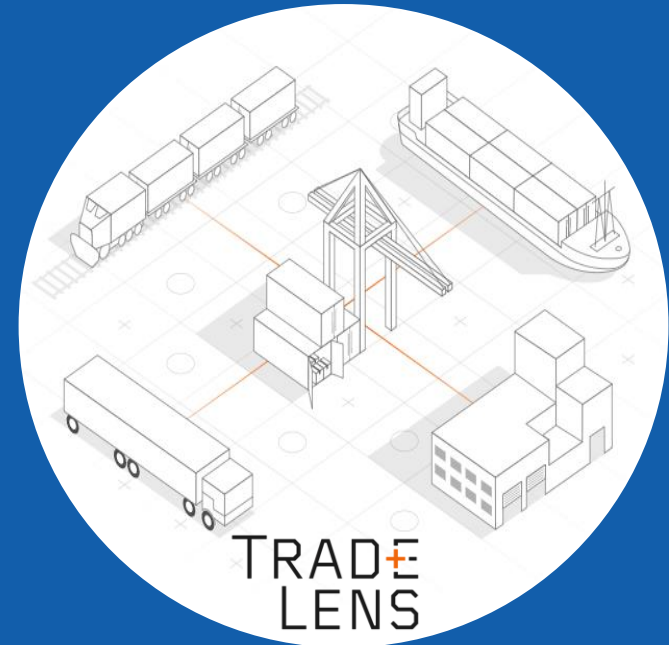
A.P. Moller-Maersk

MSC

CMA CGM

CP

TRADELENS



chainPORT

Global members:



Cross-national
partnership between the
world's leading ports

- Share benchmark practices
- Learn from one another and develop innovations



To reach us

Montreal Port Authority
2100 Pierre-Dupuy Avenue, Wing I
Montreal, QC H3C 3R5

port-montreal.com