

# RAIL

*MOVING AMERICA FORWARD*



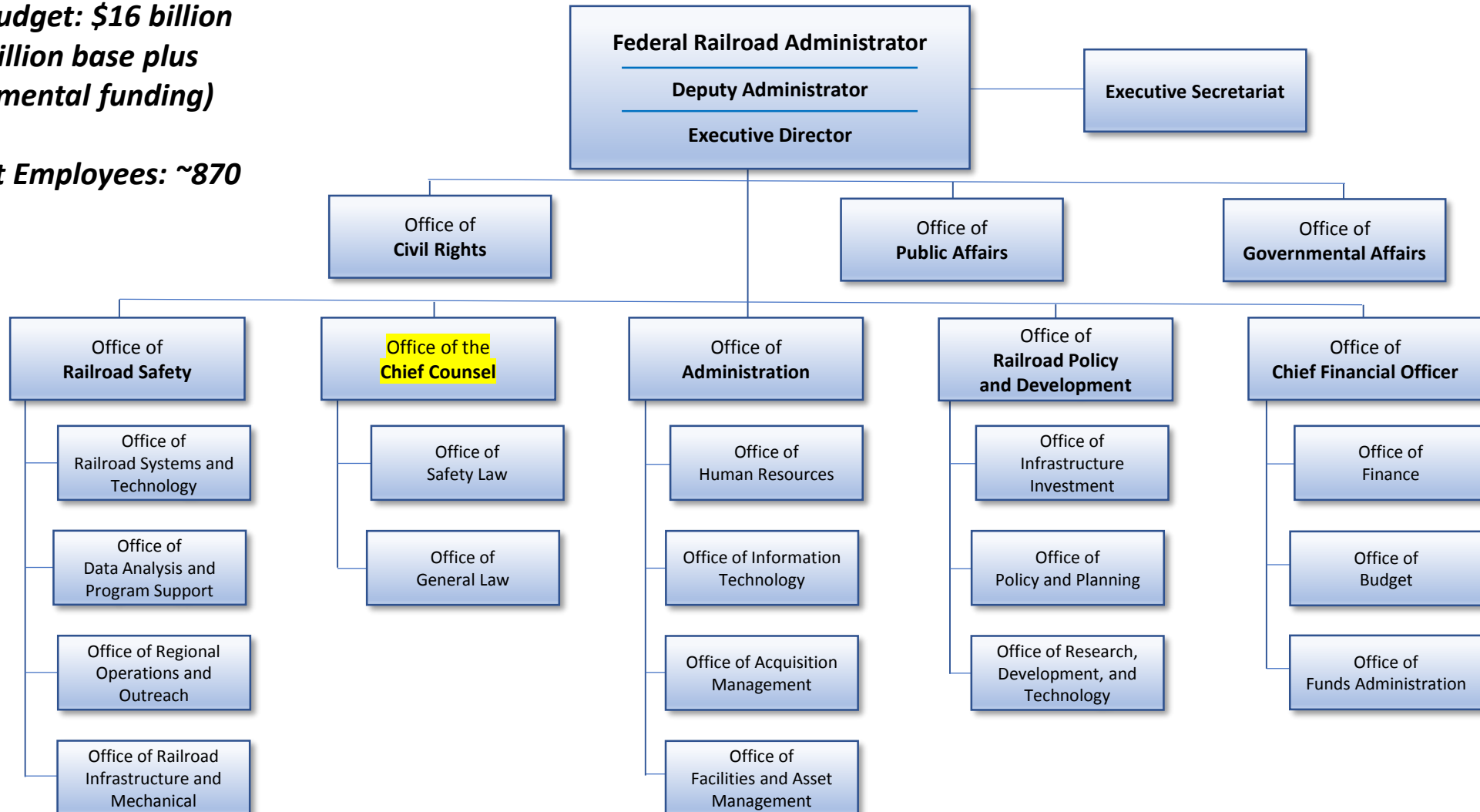
## **Chartered Institute of Logistics and Transport Spring Conference** **June 1, 2022**

**Allison Ishihara Fultz, Chief Counsel**

# Current FRA Organization At-A-Glance

**FY22 Budget: \$16 billion**  
**(\$2.8 billion base plus**  
**Supplemental funding)**

**Current Employees: ~870**



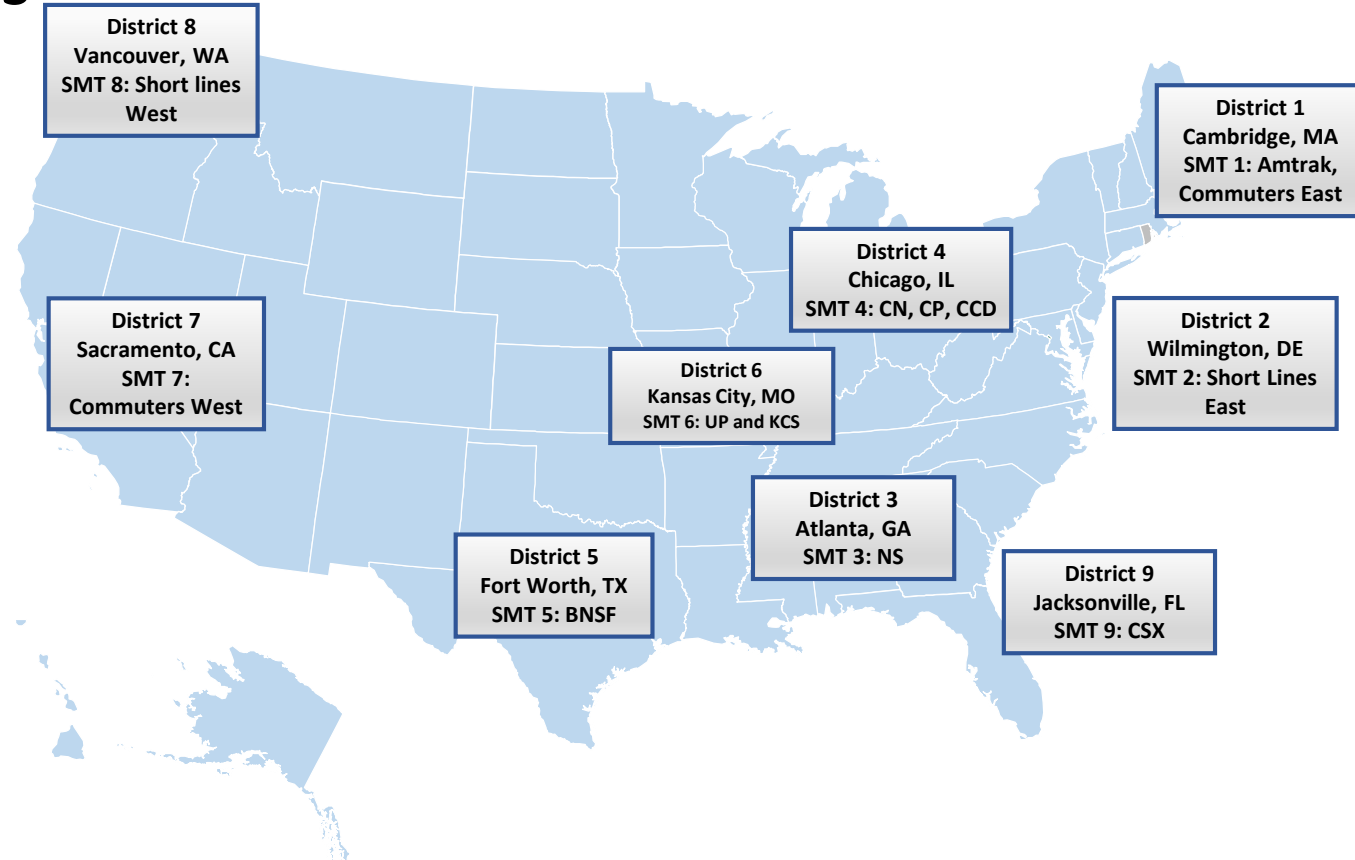
# Office of Railroad Safety

## 5 Core Technical Safety Disciplines

- Track
- Signal & Train Control
- Motive Power & Equipment
- Operating Practices
- Hazardous Materials

## Other Key Areas of Focus

- Highway-Rail Grade Crossing Safety and Trespass Prevention
- State Participation Program
- System Safety & Risk Reduction
- Partnerships Programs focused on systemic issues (C<sup>3</sup>RS, SOFA, FAMES).
- New technologies



# DOT Priorities

## KEY DEPARTMENTAL OBJECTIVES

FRA will assess a project's ability to meet one or more of these objectives:



Safety



Equitable Economic Strength,  
Improving Core Assets



Resilience, Addressing  
Climate Change



Racial Equity,  
Economic Inclusion



Transformation of our Nation's  
Transportation Infrastructure



# Investment Goals

## IIJA | Rail Development

### Key Investment Goals:



1. Renew Amtrak's fleet and facilities.



2. Modernize the Northeast Corridor.



3. Bring world-class passenger rail service to other regions across the country.



4. Grow a safer, cleaner rail system.



5. Build the foundation for a long-term sustainable rail program.

# Key Indicators on Supply Chain Disruptions



## Ports and shipping:

1. Total ships at/nearing LA-LB
2. Container ships at/nearing LA-LB
3. Container ships awaiting berths
4. Shipping rates
5. US consumer goods purchases
6. US goods imports (nominal)
7. US goods imports (real)
8. US container imports & exports

## Throughput measures:

1. Major U.S. ports throughput
2. Port of LA imports
3. Port of LB imports, exports, and empties
4. Port of LA truck turn time
5. Ports of LA-LB chassis dwell time
6. Ports of LA-LB container dwell time

## Rail:

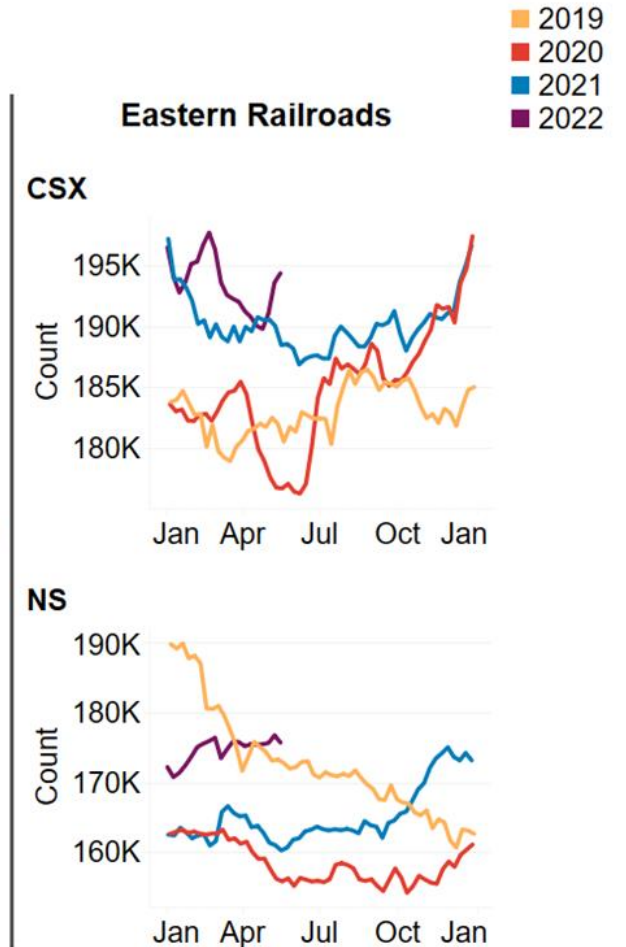
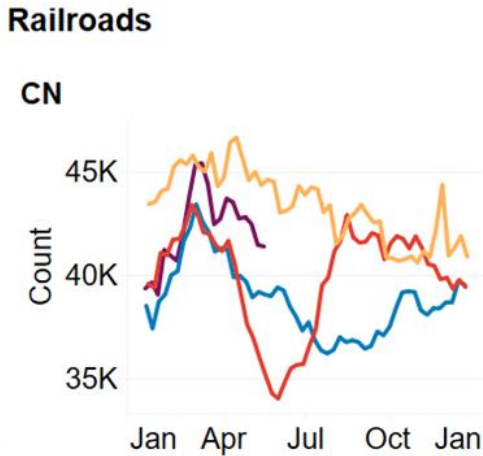
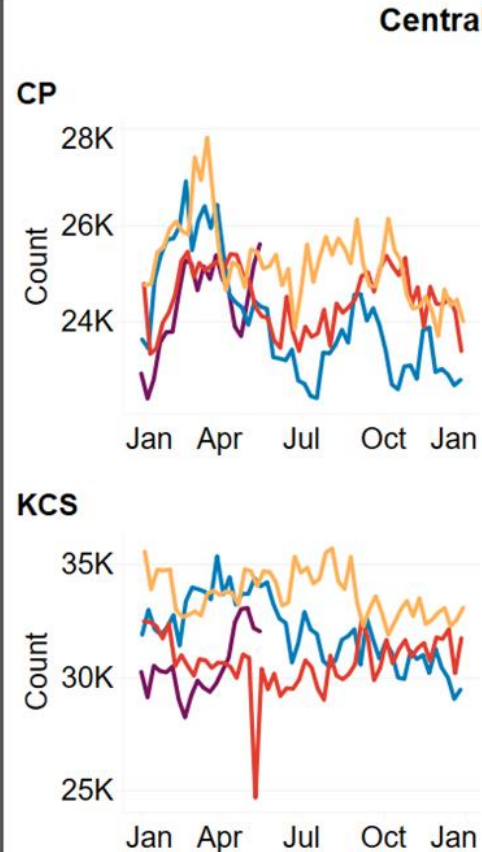
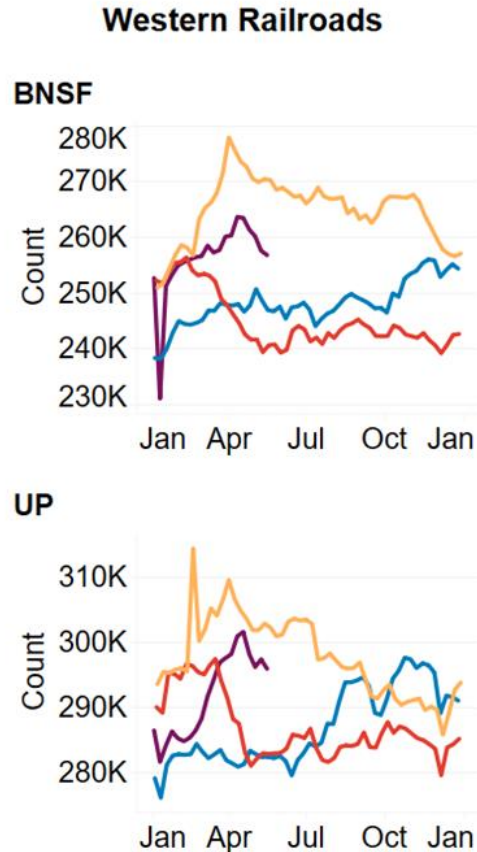
1. Rail volumes
2. Rail congestion - velocity
3. Rail congestion – dwell time
4. Rail congestion – cars on line
5. Rail dwell times, overall
6. Rail dwell times, major hubs, year
7. Rail dwell times, major hubs, week
8. Intermodal pricing

## Trucking:

1. Trucking volume
2. Trucking spot prices
3. Transportation job openings, hires, and quits
4. Truck employment count

# Rail Congestion Indicators – Cars on Line, Class I Railroads

## Rail Cars on Line



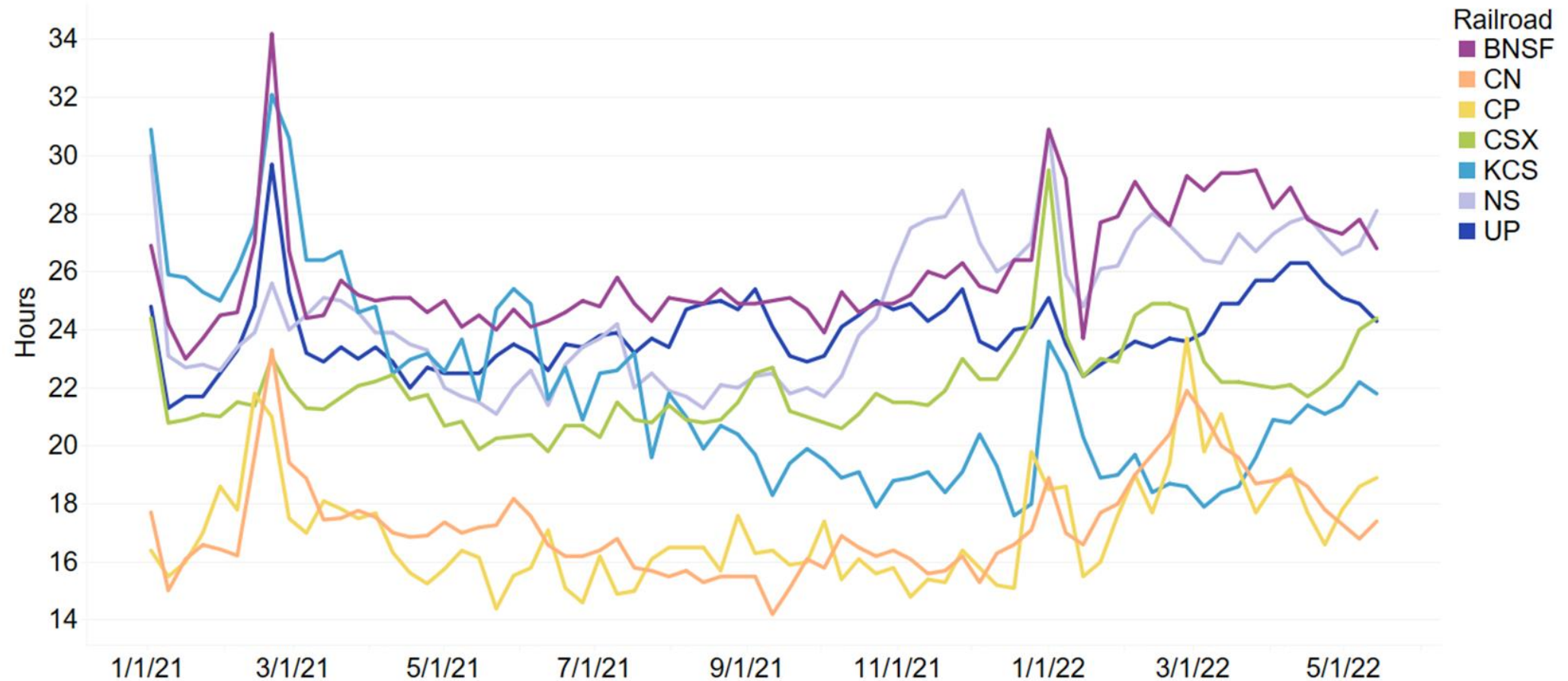
**Note:** Data through week of May 14, 2022

**Source:** Surface Transportation Board (STB)

# Dwell Times, Overall for each Class I Railroad

## Average Terminal Dwell Time

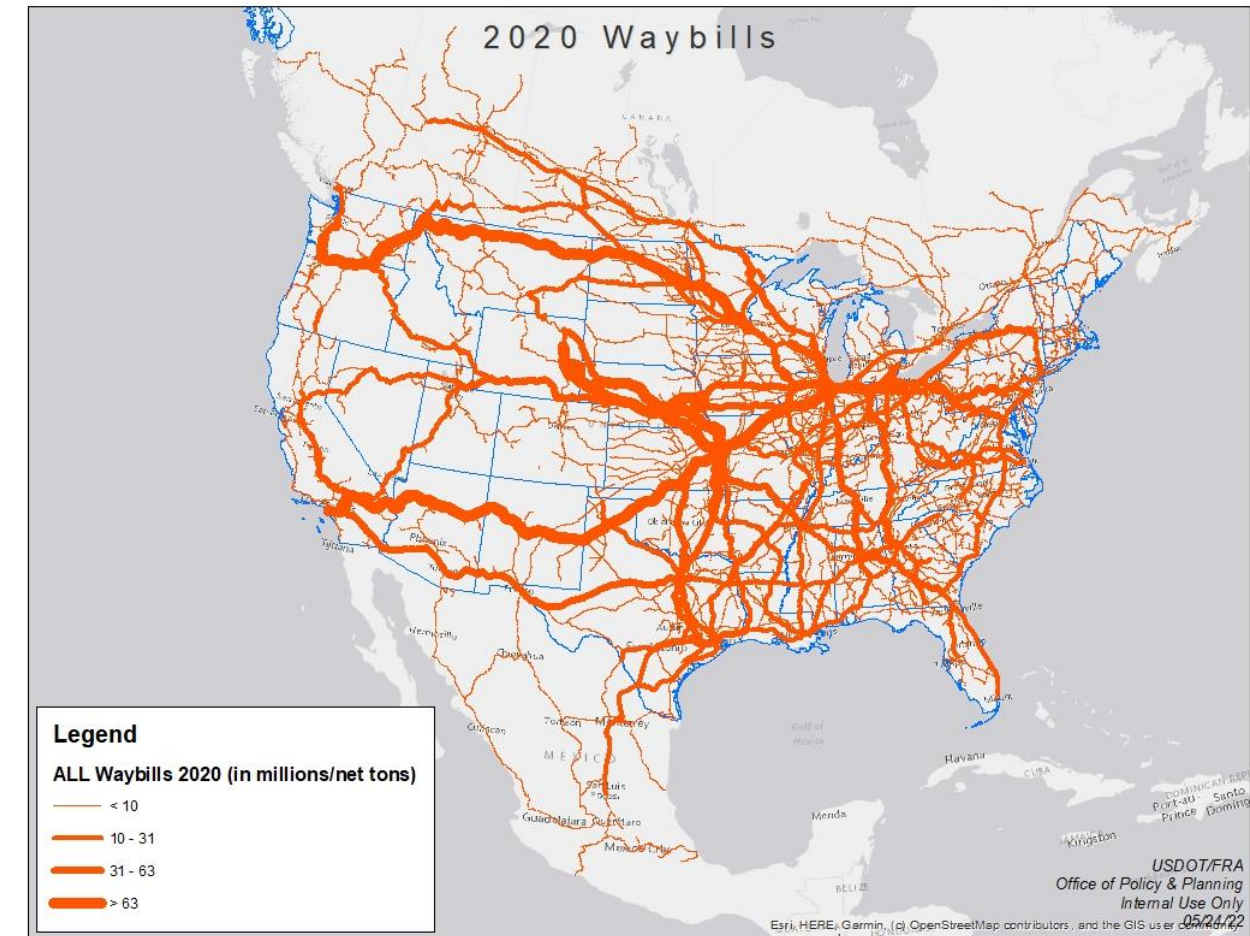
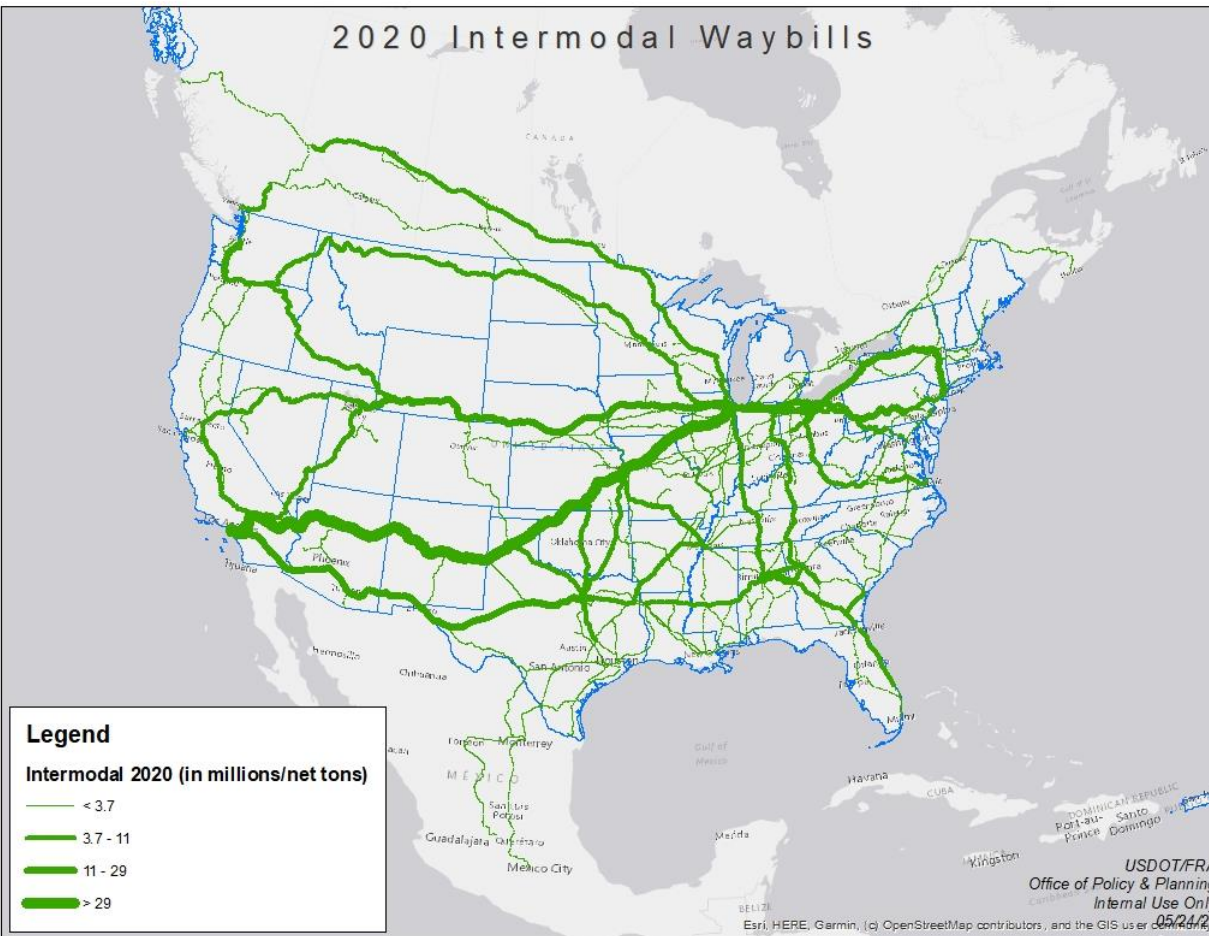
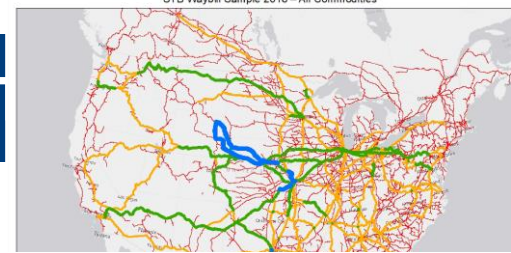
Data through May 14, 2022



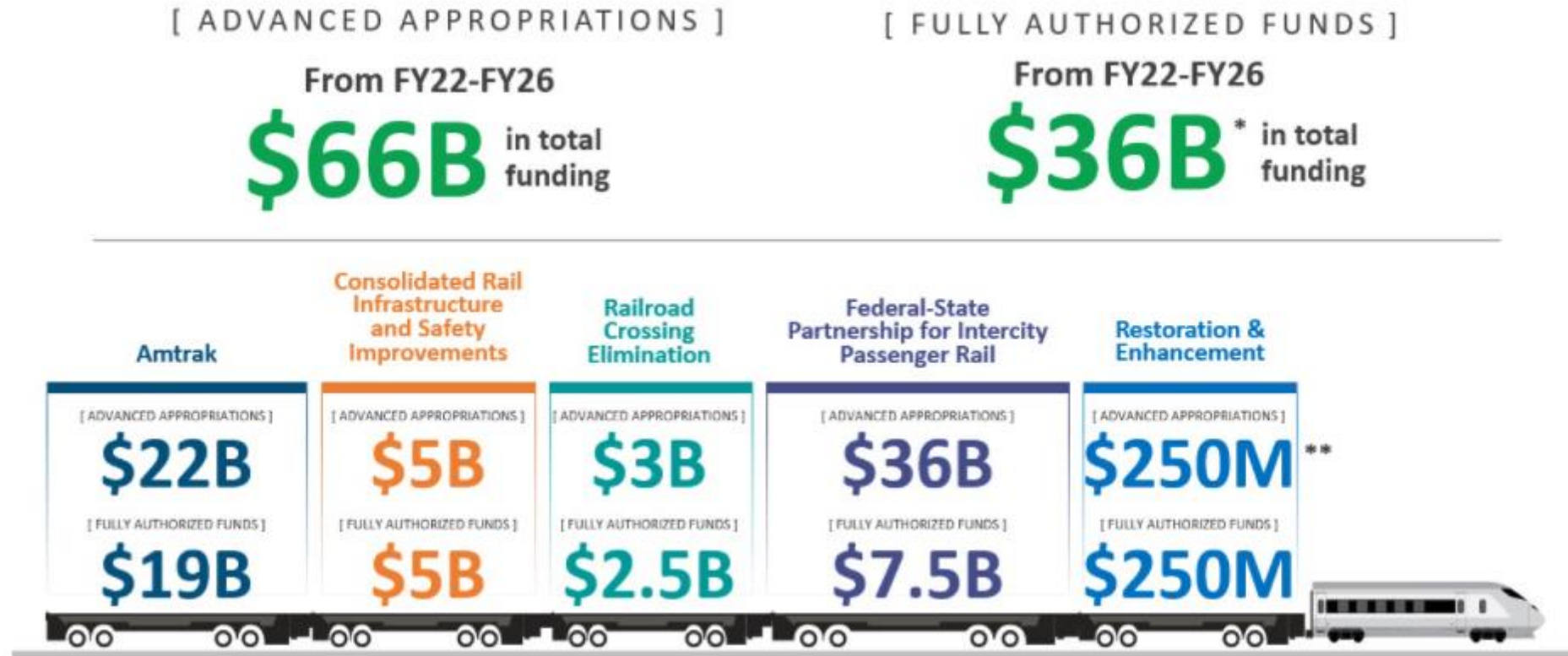
Source: Surface Transportation Board (STB)



# Snapshot of Freight Rail Network – S



# Historic investment in Rail Under the Bipartisan Infrastructure Law





# Current Passenger Rail Network (Commuter Railroads in Yellow)



# New Grant Programs Under BIL

## Corridor Identification and Development Program

ADVANCED APPROPRIATIONS  
FY22-FY26 Funding:

AUTHORIZED FUNDING (\* FULLY AUTHORIZED LEVELS)  
FY22-FY26 Funding:



U.S. Department of Transportation  
Federal Railroad Administration

## Railroad Crossing Elimination Grant Program

ADVANCED APPROPRIATIONS  
FY22-FY26 Funding: \$600 Million/Year

AUTHORIZED FUNDING (\* FULLY AUTHORIZED LEVELS)  
FY22-FY26 Funding: \$500 Million/Year \*

## Interstate Rail Compacts Grant Program

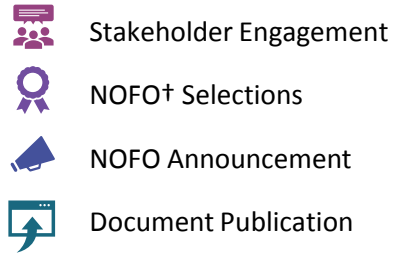
ADVANCED APPROPRIATIONS  
FY22-FY26 Funding: \$3 Million/Year

AUTHORIZED FUNDING (\* FULLY AUTHORIZED LEVELS)  
FY22-FY26 Funding:

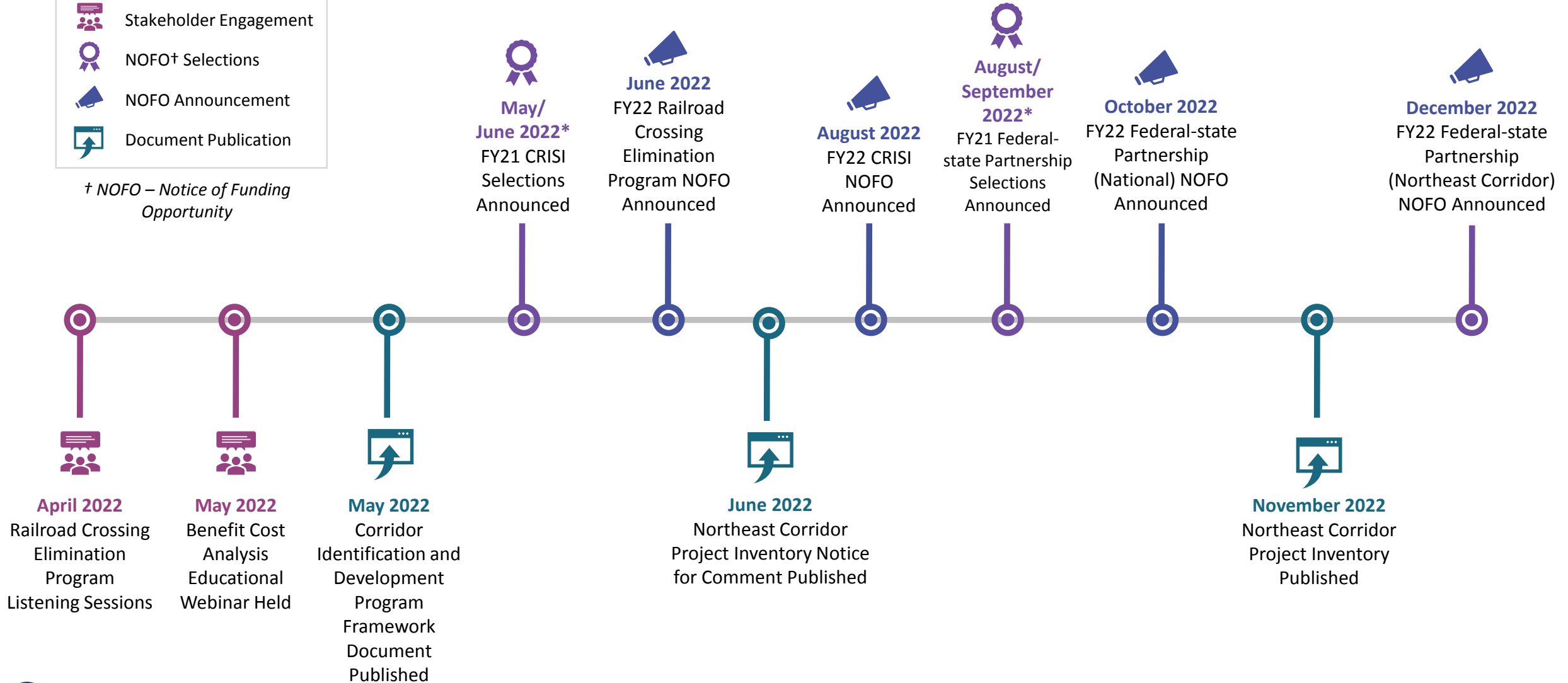


# Calendar of Upcoming FRA Publications

*\* Targeted selection period, subject to change*



*† NOFO – Notice of Funding Opportunity*



# Multiple Funding Streams

## ***FRA Competitive***

**-CRISI, Fed-State Partnership, Corridor ID, Interstate Compacts**

## ***FTA Formula and Competitive***

**-CIG, Fed/Local Funding Share, EPD, Metro & Statewide Planning**

## ***Build America Bureau Competitive and other***

**-MEGA INFRA & Rural**

**-RRIF loans**

# Bipartisan Infrastructure Law in Action



*Administrator Bose announced a \$32 million CRISI Grant to improve passenger and freight rail for the TCMC Corridor on March 9, 2022*



# Bipartisan Infrastructure Law Website

For more information about the Bipartisan Infrastructure Law and rail, please visit our website:

<https://railroads.dot.gov/BIL>





# Contact Us

Federal Railroad Administration  
1200 New Jersey Avenue, SE  
Washington, DC 20590

**Allison Ishihara Fultz, Chief Counsel**

[allison.fultz@dot.gov](mailto:allison.fultz@dot.gov)

202-493-0793



Connect with us at **USDOTFRA**



U.S. Department of Transportation  
**Federal Railroad Administration**