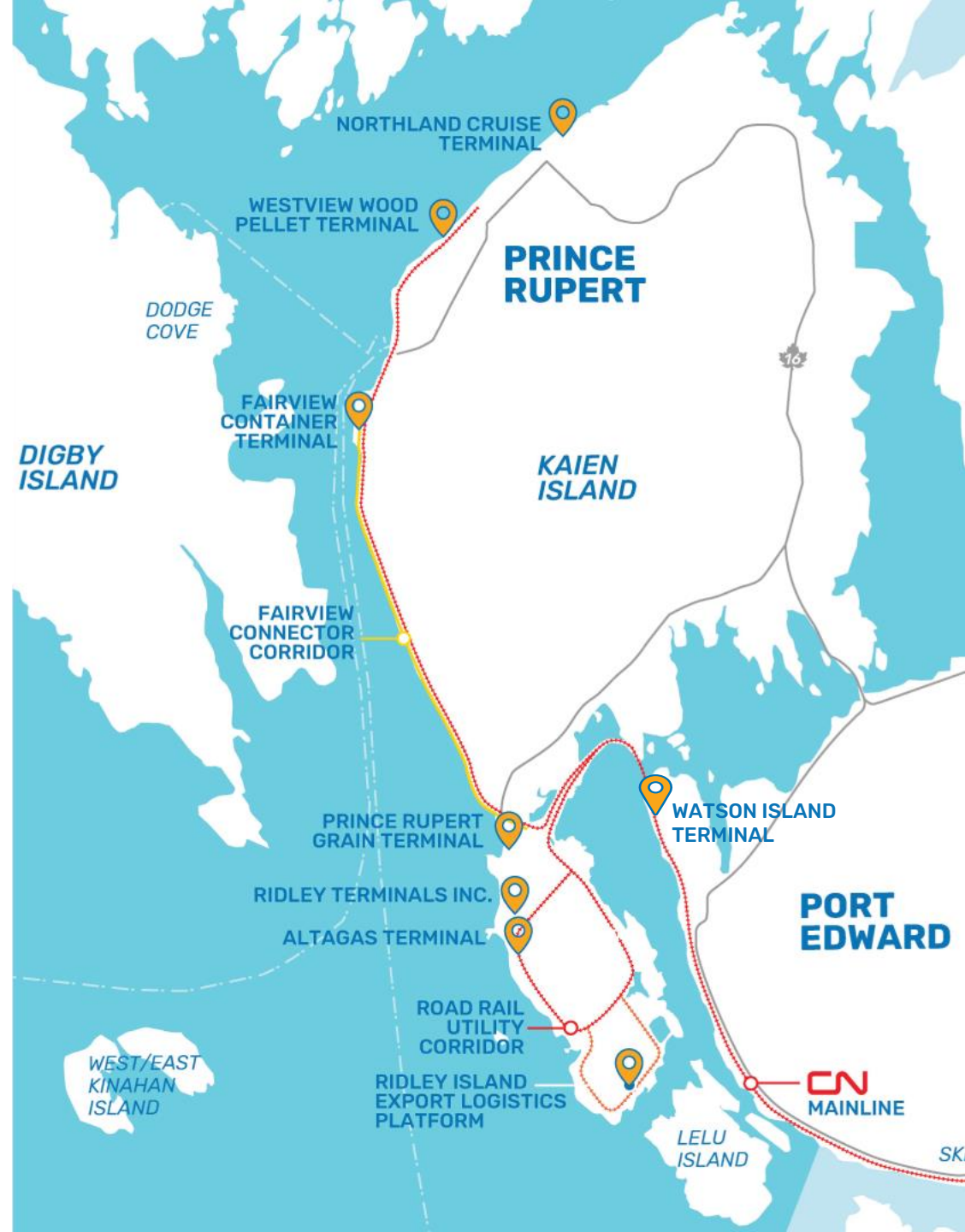
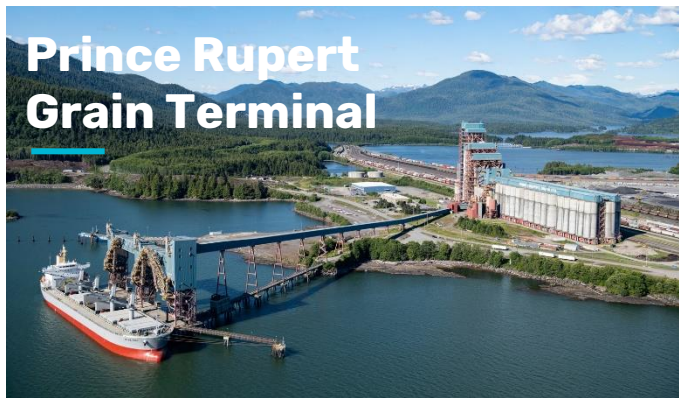


| Resiliency at the Port of Prince Rupert



Michael Inman
Director, Business Development



INVESTMENTS 2016-2021	INVESTMENTS 2021-2026
\$1,250,000,000	\$2,000,000,000



3RD LARGEST PORT IN CANADA

\$60 BILLION
IN ANNUAL TRADE

32.4 MILLION
TONNES SHIPPED
IN 2020

6100 JOBS
DIRECT & INDIRECT

NATURAL ADVANTAGES

HONG KONG

TIANJIN

QINGDAO

SHANGHAI

BUSAN

TOKYO

PRINCE
RUPERT

VANCOUVER

SEATTLE

LOS ANGELES

SHORTEST
SAILING TIMES

11 DAYS

12 DAYS

13 DAYS

14 DAYS

SAFE ACCESS

Sheltered harbour with direct passage to open Pacific Ocean.



DEEPEST HARBOUR

Easily accommodates the largest vessels trans-Pacific trade



COMMUNITY SUPPORT

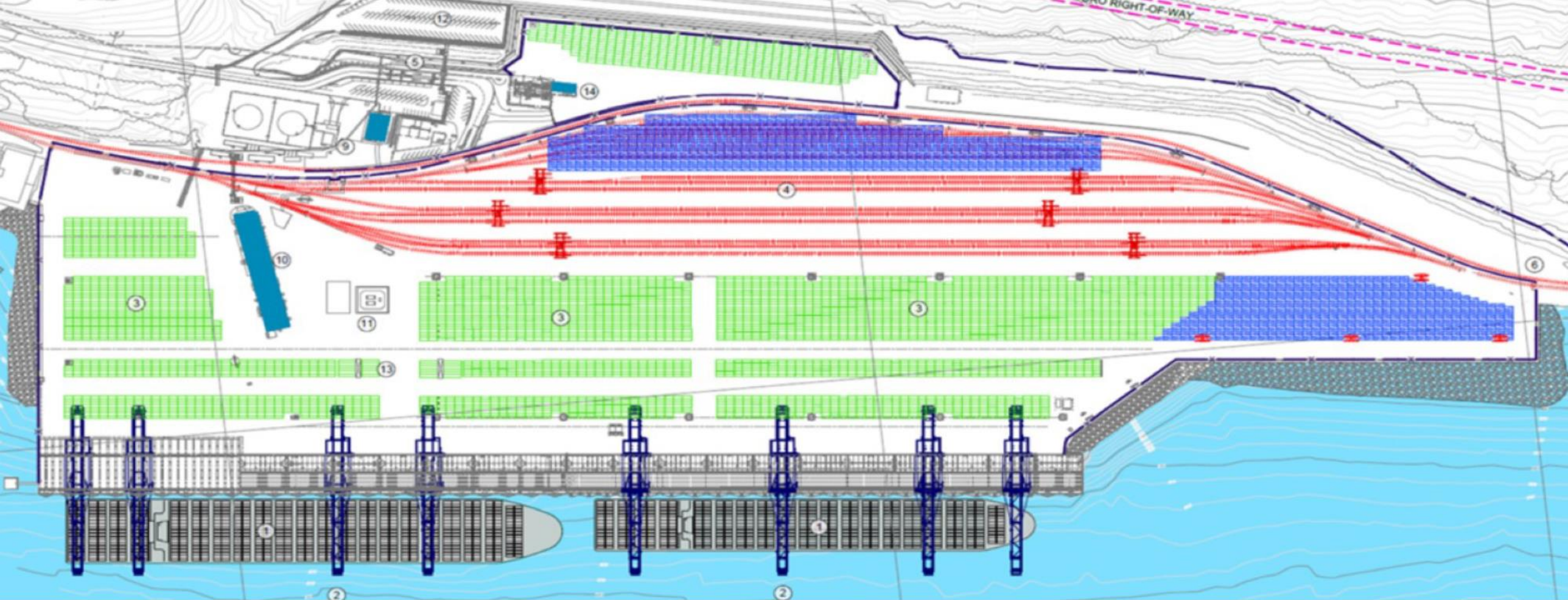
Strong local connections to port operations and development



TRANS-CONTINENTAL RAIL

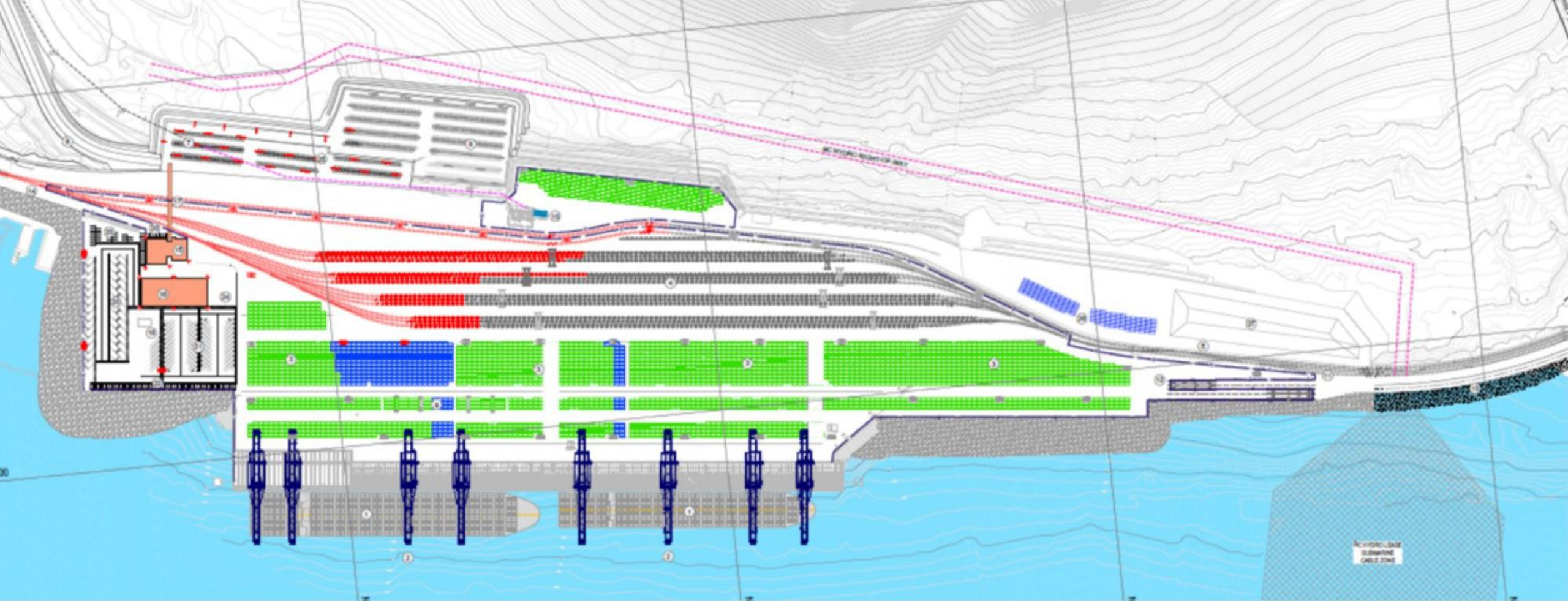
CN's North American network provides direct market reach.





FAIRVIEW CONTAINER TERMINAL EXPANSION

1.6M TEU Capacity by July 2022



FAIRVIEW CONTAINER TERMINAL EXPANSION

1.8M TEU Capacity by 2024 (Q2)



INTERMODAL ECO-SYSTEM

